

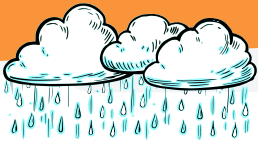
DevOps Training Enhances end-to-end Pipeline

A company that focuses on building custom loan software workflows, managing robust reports, and automating credit decisions was looking to improve their speed to market. They had already engaged with Sketch to build a proof-of-concept CI/CD pipeline leveraging a largely pre-selected technology stack. Their hope was to prove an automated end-to-end pipeline could be achieved and then expand upon its automated capabilities.



"We are really happy with where everyone is after training and what they were able to learn and accomplish in such a short amount of time. This was the best development and training we've had in a really long time and is light years beyond any other company that we've brought into train our teams."

— Chief Operating Officer



CHALLENGE

One critical step, post-POC, would involve training the broader technical team contributors on the DevOps mindset and demonstrate to them the capabilities that they would be entrusted to expand upon.



SOLUTION

We mutually agreed to prove out the POC pipeline first and present our findings before requesting time from the broader technical team for the DevOps training. After just a handful of iterations, Sketch was able to demonstrate the CI/CD automated capability and agreed it was time to deliver our DevOps Bootcamp to the client's broader team.

Over the course of three days, two of Sketch's technical trainers delivered a tailored DevOps Bootcamp that incorporated many of the technologies that would be made available to the client team moving forward. This customization to the training came from our POC efforts. This ultimately made the content of the training even more relevant and applicable to the participants due to the direct line back to how they would be implementing and enhancing the end-to-end pipeline that had been started.



RESULTS

By providing the training *after* the period of immersion and delivery of a POC, Sketch was able to ensure the content of the training was most applicable to the trainees. Therefore, **the client's team was able to seamlessly transition from the classroom to their real-world environment** and pick up where the POC left off. The narrowness of the end-to-end POC proved to the team the possibility of automating the pipeline. From there, they were able to begin adding to the automation capabilities, so the pipeline continues to become more robust at all stages.